

## Original Article

# Assessment of causality between modifiable factors and heart failure: A Mendelian randomization analysis

Wenxiu Wang MD<sup>1†</sup>, Jiayi Wang MD<sup>2†</sup>, Zhenhuang Zhuang MD<sup>1</sup>, Meng Gao MD<sup>1</sup>, Ruotong Yang MD<sup>1</sup>, Zhonghua Liu PhD<sup>3</sup>, Tao Huang PhD<sup>1,4,5,6</sup>

<sup>1</sup>Department of Epidemiology & Biostatistics, School of Public Health, Peking University, Beijing, China.

<sup>2</sup>Department of Pharmacy, Peking University First Hospital, Beijing, China.

<sup>3</sup>Department of Statistics and Actuarial Science, The University of Hong Kong, Hong Kong, China.

<sup>4</sup>Department of Global Health, School of Public Health, Peking University, Beijing, China.

<sup>5</sup>Center for Intelligent Public Health, Academy for Artificial Intelligence, Peking University, Beijing, China.

<sup>6</sup>Key Laboratory of Molecular Cardiovascular Sciences (Peking University), Ministry of Education, Beijing, China.

†Both authors contributed equally to this manuscript

**Background and Objectives:** Observational studies have associated lifestyle, dietary, adiposity, biochemical and clinical measures with heart failure. Whether the associations are causal remains unclear. We aimed to determine the causal associations between modifiable risk factors and incidence or mortality of heart failure. **Methods and Study Design:** Using single-nucleotide polymorphism (SNP) as genetic instruments, we conducted a two-sample Mendelian randomization (MR) analysis to estimate the causal effects of 27 modifiable risk factors on incident heart failure (2526 cases; 20926 participants) and mortality of heart failure (1798 deaths; 2828 patients). **Results:** None of 27 modifiable risk factors were significantly associated with incidence or mortality of heart failure after the Bonferroni correction ( $p < 0.0019$ ). However, there was suggestive evidence for genetically predicted educational attainment (odds ratio [OR] per educational year increase: 0.57, 95% CI 0.33-0.99,  $p = 0.049$ ), circulating mono-unsaturated fatty acid concentrations (OR per 1-SD increase [OR<sub>SD</sub>]: 1.50, 1.10-2.04,  $p = 0.011$ ), C-reactive protein (CRP) (1.53, 1.04-2.25,  $p = 0.031$ ), high-density lipoprotein (HDL) (0.84, 0.72-0.99,  $p = 0.036$ ), triglycerides (1.24, 1.00-1.52,  $p = 0.045$ ), and systolic blood pressure (SBP) (1.06, 1.01-1.11,  $p = 0.017$ ) with incident heart failure. **Conclusions:** Our findings provide supporting evidence for prioritizing certain modifiable risk factors such as education, lipids, and blood pressure for primary prevention of heart failure, suggesting important clues for further mechanism research.

**Key Words:** heart failure, Mendelian randomization, modifiable factors, incidence, mortality

## INTRODUCTION

Heart failure is a syndrome driven by abnormalities of cardiac structure and function, involving increased intracardiac pressure or decreased cardiac output during stress or rest.<sup>1</sup> Due to population aging and growth, heart failure has been the fastest-growing cardiovascular event in the world and thought to affect more than 26 million people, imposing a heavy burden on health-care systems.<sup>2-4</sup> In spite of advances in therapeutic alternatives, mortality in heart failure remains high, 5-year survival ranging from 20-50% after first diagnosis.<sup>5,6</sup> Therefore, understanding the role of modifiable risk factors in development of heart failure is of great significance for its prevention and management.

A scientific statement from the American Heart Association suggests that elevated blood pressure, diabetes mellitus, body mass index (BMI), and hyperlipidemia are associated with an increased risk of heart failure.<sup>7</sup> Inconclusive evidence from conventional observational studies have reported that moderate alcohol intake, coffee consumption, adiponectin, physical activity, and a healthy

diet are associated with lower risk,<sup>8-14</sup> whereas smoking status, heart rate, sleep apnea, uric acid, C-reactive protein (CRP), depression and atrial fibrillation are associated with higher risk of heart failure.<sup>15-19</sup> Available evidence is largely inadequate as conventional observational studies are susceptible to reverse causation and residual confounding, and evidence from randomized controlled trials (RCT) is inclined to be insufficient and inconclusive.<sup>20-25</sup> Therefore, which specific factors affect heart failure risk and the strength of these effects remain unknown.

Mendelian randomization (MR) approach has been

**Corresponding Author:** Dr Tao Huang, Department of Epidemiology & Biostatistics, School of Public Health, Peking University, China. 38 Xueyuan Road, Beijing, 100191 China  
Tel: (86) 010-82801528

Email: huangtao@bjmu.edu.cn

Manuscript received 17 March 2021. Initial review completed 06 April 2021. Revision accepted 05 May 2021.

doi:

widely used to uncover unbiased causality among exposure and outcome where genetic variants are used as instruments for risk factors.<sup>26</sup> As genetic variants are fixed at conception and segregate randomly from parents to offspring, results from MR analyses are unlikely to be influenced by confounding and reverse causation bias. MR approach therefore circumvents the above-mentioned limitations of conventional observational studies and has been increasingly used to explore the potential causal effects of risk factors on disease. However, few MR studies were conducted to investigate the etiology of heart failure and only focused on the metabolic factors such as low-density lipoprotein (LDL), high-density lipoprotein (HDL), triglycerides, BMI, blood pressure and uric acid.<sup>27-32</sup>

Given the unclear causal relevance of previously reported observational associations of modifiable risk factors with heart failure and limited exploration in MR analyses to date, we performed a two-sample MR analysis to evaluate the causal association of potentially modifiable risk factors with heart failure.

## METHODS

### *Heart failure outcome genetic data*

Summarized statistics of the association between genetic variants and incident heart failure were assessed from Cohorts for Heart and Aging Research in Genomic Epidemiology-Heart Failure Working Group (CHARGE-HF) of adults of European ancestry, including 20926 participants who had not been diagnosed with heart failure at baseline, of whom 2526 cases occurred during an average of 11.5 years of follow-up.<sup>33</sup> In addition, genotyping data for mortality of heart failure were identified from a genome-wide association study (GWAS) involving 2828 new-onset heart failure patients of European ancestry and 20-30% had a myocardial infarction history, of which 1798 died during an average of 3.5 years follow-up time.<sup>34</sup>

### *Modifiable risk factors*

We focused on potentially modifiable risk factors, divided into obesity-related, biochemical and clinical measures, lifestyle and dietary factors groups, which were identified from 2019 guideline issued by American College of Cardiology/American Heart Association (ACC/AHA) on primary prevention of cardiovascular disease.<sup>35</sup> In addition, we also identified other risk factors for heart failure from literature review of published epidemiological studies using PubMed (up to Jan 31, 2020). To be more specific, 3 obesity-related traits (BMI, body fat, waist : hip ratio adjusted by BMI [WHRadjBMI]),<sup>35,36</sup> 9 lifestyle and dietary factors (education, smoking, alcohol intake, coffee consumption, circulating iron and zinc, circulating 25-hydroxyvitamin D, circulating mono-unsaturated and omega-3 fatty acids),<sup>15,19,35,37-40</sup> 11 biochemical measures (fasting glucose, fasting insulin, 2h glucose, glycated hemoglobin [HbA1c], adiponectin, CRP, HDL, LDL, total cholesterol, triglycerides, uric acid),<sup>11,35,41,42</sup> 4 clinical measures (systolic blood pressure [SBP], diastolic blood pressure [DBP], pulse pressure, heart rate),<sup>9,35</sup> were considered as potentially risk factors and were brought into the two-sample MR analysis.

### *Genetic instruments selection*

Single-nucleotide polymorphism (SNP) used as genetic instruments were selected from the largest genome-wide association studies (GWAS) (Table 1). For each SNP, only those below threshold of genome-wide significance ( $p \leq 5 \times 10^{-8}$ ) and independent from each other for each trait - that is, linkage disequilibrium (LD) threshold of  $r^2$  less than 0.2 were considered as potential instruments.<sup>43</sup> When there was LD between genetic variants, the one with the lowest  $p$  value for the associated risk factor was retained. The estimates of association between SNPs and risk factors were derived from sex-combined results of European ancestry or multi-ancestries are presented in Supplementary Table 1.

### *Statistical analysis*

The MR is based on the assumptions that genetic instruments (1) are only associated with risk factors, (2) not associated with any confounders, and (3) influence heart failure only through risk factors (Figure 1). Another assumption is the associations of risk factors with heart failure are linear, without statistical interaction.<sup>44</sup>

For traits with 2 or more SNPs as genetic instruments, we estimated the causal effect by the inverse-variance weighted (IVW) method to combine the ratio estimates of each variant.<sup>45</sup> To evaluate the robustness of causal inference, we also conducted the weighted median, simple median, and MR-Egger regression approach for sensitivity analysis. Potential pleiotropy was assessed by the intercept obtained by MR-Egger approach.<sup>46</sup> For those traits with one SNP as instrument, the Wald ratio was used to estimate the causal effect by dividing the estimate for the association between the variant and risk factors by the association between the variant and incidence or mortality of heart failure.<sup>45</sup>

Results are reported as ORs with their 95% confidence intervals per unit genetically predicted increase in each risk factor. We included 27 risk factors in our analysis. Considering multiple testing, a Bonferroni correction significance threshold was set as 0.0019 (0.05/27). Also, we established a threshold for suggestive evidence when  $p$  values are between 0.0019 and 0.05. All of the above analyses were performed using R version 3.6.2.

We did power calculations for risk factors with significant or suggestive associations in IVW analysis using an online calculation tool (<https://shiny.cnsgenomics.com/mRnd/>) (Supplementary Table 3).

## RESULTS

### *Lifestyle and dietary factors*

Genetically predicted higher education showed a suggestive association with lower incident heart failure risk (OR per educational year increase: 0.57, 95% CI 0.33-0.99,  $p=0.049$ ) (Figure 2), but not with mortality of heart failure (0.97, 0.51-1.86,  $p=0.927$ ). The associations observed in sensitivity analysis using simple-median and weighted-median method were consistent. The MR-Egger method indicated no directional pleiotropy ( $p=0.82$ ) (Supplementary Table 2). In addition, genetically predicted smoking, alcohol and coffee consumption were not associated with incident or mortality of heart

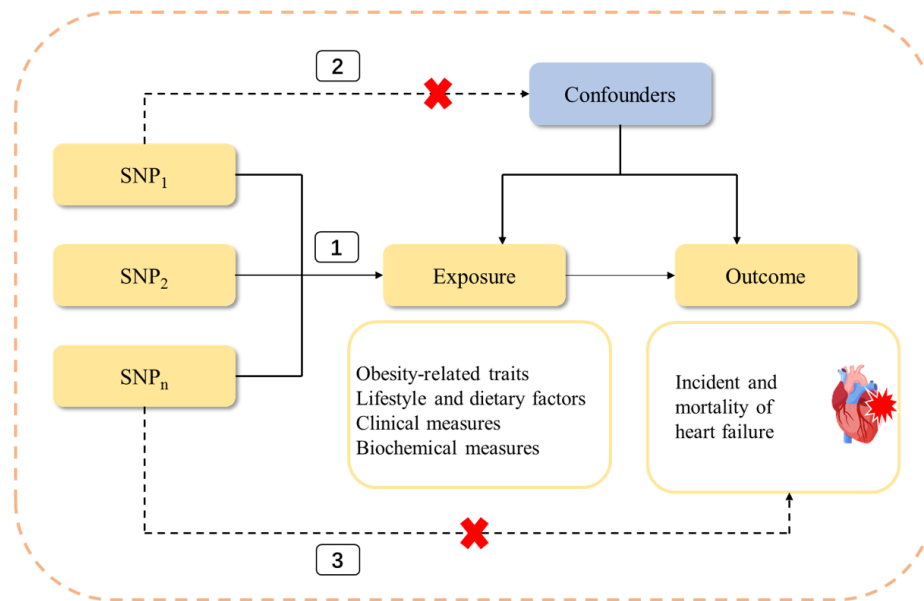
**Table 1.** Description of modifiable risk factors

	Consortium or study	Maximum sample size	Population	Reference	Number of SNPs identified in GWAS	Number of SNPs included in MR (incidence/mortality) <sup>†</sup>	R <sup>2</sup> (%) explained by the SNPs
<b>Obesity-related traits</b>							
BMI, kg/m <sup>2</sup>	GIANT	322,154	European	Locke et al, 2015	77	77	2.4
Body fat, %	56 studies	100,716	Trans-ethnic	Lu Y et al, 2016	12	12	0.6
WHRadjBMI	GIANT	224,459	European	Shungin et al, 2015	39	39	1.2
<b>Lifestyle and dietary factors</b>							
Education, year	SSGAC	405,072	European	Okbay et al, 2016	162	57	0.5
Smoking, cigarettes per day	TGC	74,053	European	Furberg et al, 2010	3	3	0.5
Alcohol intake, drinks per week	GSCAN	945,988	European	Liu et al, 2019	94	47	0.2
Coffee, cups consumed per day	28 studies	87,998	European	Marilyn et al, 2015	4	4	1.3
Circulating iron, µmol/L	ATR	2,299	European	Beben et al, 2011	2	1	1.2
Circulating zinc, µmol/L	QIMR	2,603	European	Evans et al, 2013	3	2	4.6
Circulating 25-hydroxyvitamin D, nmol/L	SUNLIGHT	79,366	European	Xia et al, 2018	6	6	2.6
Circulating MUFA, % <sup>‡</sup>	14 studies	13,535	European	Kettunen J et al, 2016	7	3	1.8
Circulating omega-3 fatty acid, % <sup>‡</sup>	14 studies	13,544	European	Kettunen J et al, 2016	5	3	1.8
<b>Biochemical measures</b>							
Fasting glucose, mmol/L	MAGIC	133,010	European	Robert et al, 2013	36	36	4.8
Fasting insulin, pmol/L	MAGIC	133,010	European	Robert et al, 2013	19	19	1.2
2h glucose, mmol/L	MAGIC	133,010	European	Robert et al, 2013	9	9	0.3
HbA1C, %	MAGIC	46,368	European	Soranzo et al, 2010	11	11/10	1.8
Adiponectin, µg/mL	16 studies	45,891	Trans-ethnic	Dastani et al, 2012	18	17	1.9
CRP, mg/L	CHARGE	204,402	European	Symen et al, 2018	40	35	0.8
HDL, mg/dL	GLGC	188,578	European	Willer et al, 2013	71	70	13.7
LDL, mg/dL	GLGC	188,578	European	Willer et al, 2013	57	56/55	14.6
TC, mg/dL	GLGC	188,578	European	Willer et al, 2013	74	73/74	15.0
TG, mg/dL	GLGC	188,578	European	Willer et al, 2013	40	40/39	11.7
Uric acid, mg/dL	GUGC	110,347	European	Köttgen et al, 2013	30	30	7.0
<b>Clinical measures</b>							
SBP, mmHg	GERA, UKB, ICBP	321,262	Trans-ethnic	Hoffmann et al, 2017	103	42	0.5
DBP, mmHg	GERA, UKB, ICBP	321,262	Trans-ethnic	Hoffmann et al, 2017	118	52/51	0.6
Pulse pressure, mmHg	GERA, UKB, ICBP	321,262	Trans-ethnic	Hoffmann et al, 2017	157	73/72	0.9
Heart rate, bpm	UKB	265,046	European	Eppinga et al, 2016	66	30	0.9

GWAS: Genome-wide association study; MR: Mendelian Randomization; BMI: body mass index; WHRadjBMI: waist-hip ratio adjusted by BMI; HbA1C: glycated hemoglobin; MUFA: mono-unsaturated fatty acid; HDL: high-density lipoprotein; LDL: low-density lipoprotein; CRP: C-reactive protein; SBP: systolic blood pressure; DBP: diastolic blood pressure; TC: total cholesterol; TG: triglycerides; SNP: single nucleotide polymorphism; CHARGE: Cohorts for Heart and Aging Research in Genomic Epidemiology; MAGIC: Meta-Analyses of Glucose and Insulin-Related Traits Consortium; ICBP: International Consortium for Blood Pressure; GIANT: Genetic Investigation of Anthropometric Traits; GLGC: Global Lipids Genetics Consortium; TGC: Tobacco and Genetics Consortium; ATR: Australian Twin Registry; QIMR: Queensland Institute of Medical Research; GUGC: Global Urate Genetics Consortium; GERA: Genetic Epidemiology Research on Adult Health and Aging; ICBP: International Consortium for Blood Pressure; SSGAC: Social Science Genetic Association Consortium; GSCAN: GWAS and Sequencing Consortium of Alcohol and Nicotine use; UKB: UK Biobank.

<sup>†</sup>Number of SNPs excluded for each exposure because of missing in heart failure summary statistics data, in linkage disequilibrium with another SNP or derived from sex-specific results.

<sup>‡</sup>Restricted analyses that excluded SNPs associated with other classes of fatty acids.



**Figure 1.** Principles of Mendelian randomization analysis and assumptions that need to be met to obtain unbiased causal effect estimates. Dashed lines represent potential pleiotropic or direct causal effects that could violate Mendelian randomization assumptions. Three assumptions of MR are as follows: (1) genetic variants used as instrumental variables are associated with the exposure, (2) genetic variants are not associated with any confounders and (3) genetic variants influence outcome only through exposure. SNP=single nucleotide polymorphisms.

failure (Figure 2).

For dietary factors, we observed a suggestive association of genetically determined higher circulating monounsaturated fatty acid levels with increased risk of heart failure ( $OR_{SD}=1.50$ , 1.10-2.04,  $p=0.011$ ), but not with mortality of heart failure (0.94, 0.64-1.39,  $p=0.769$ ) (Figure 2). Simple median and weighted median methods supported the association with incidence risk, but with less precision (Supplementary Table 2). No significant results were observed for genetically predicted circulating iron, zinc, 25-hydroxyvitamin D and omega-3 fatty acid (Figure 2).

#### **Obesity-related traits**

There was little evidence that genetically predicted BMI was associated with risk of heart failure ( $OR_{SD}=1.10$ , 0.99-1.46,  $p=0.065$ ), with a stronger association for simple median method (1.85, 1.24-2.75,  $p=0.002$ ) (Figure 2 and Supplementary Table 2). However, MR-Egger regression analysis showed evidence of pleiotropy for the association ( $p=0.008$ ) (Supplementary Table 2). Genetically predicted BMI was not associated with mortality of heart failure. Likewise, there was no evidence of causal association of body fat percentage and WHRadjBMI with risk of heart failure (Figure 2 and Supplementary Table 2).

#### **Biochemical and clinical measures**

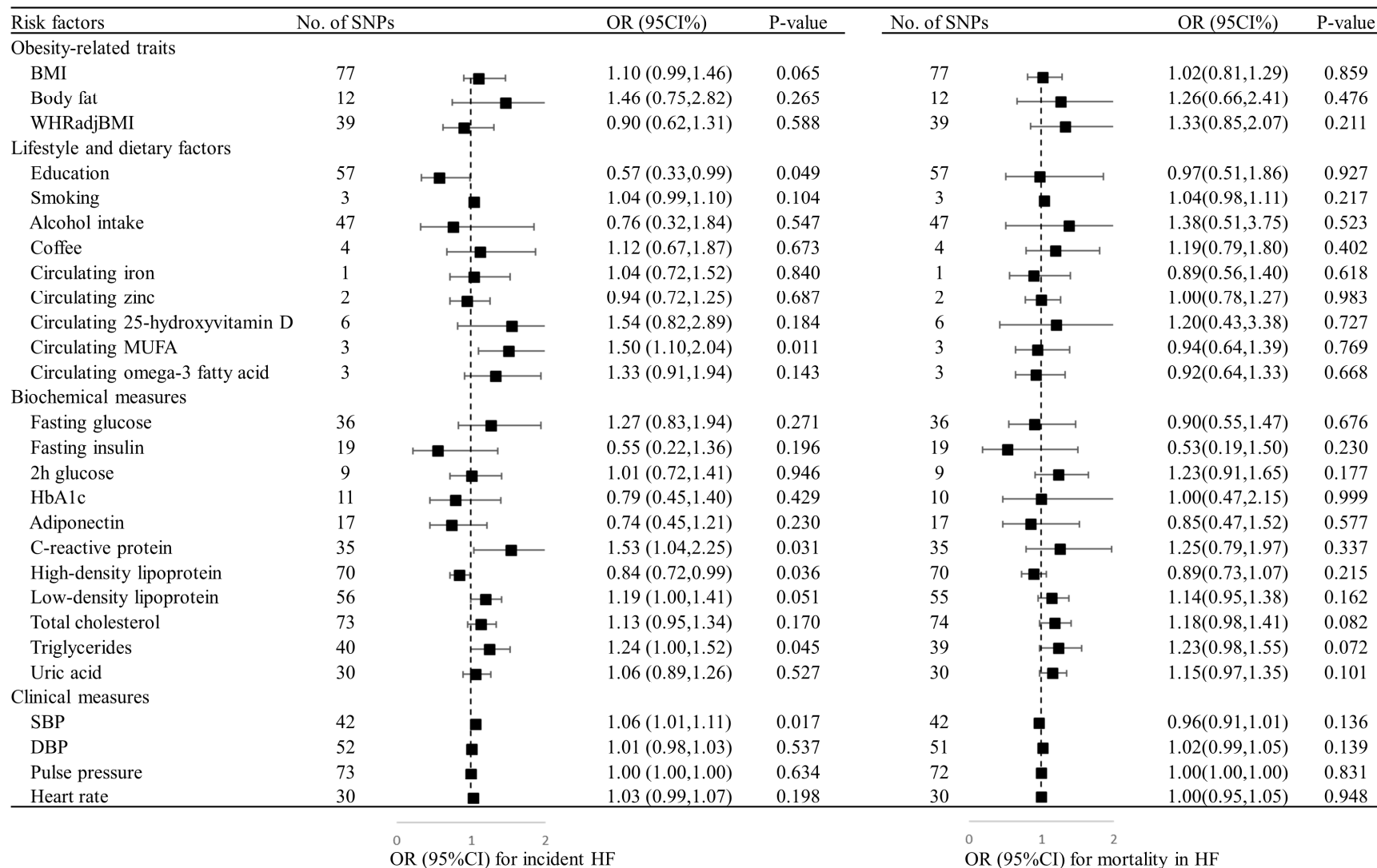
We observed suggestive associations of genetically determined higher HDL ( $OR_{SD}=0.84$ , 0.72-0.99,  $p=0.036$ ) with lower risk of heart failure, whereas an incident higher risk for genetically predicted higher triglycerides (1.24, 1.00-1.52,  $p=0.045$ ), CRP (1.53, 1.04-2.25,  $p=0.031$ ), and SBP (1.06, 1.01-1.11,  $p=0.017$ ) (Figure 2). Except for simple-median method showing a stronger estimate of HDL (0.65, 0.49-0.87,  $p=0.004$ ), none of the other factors showed associations in sensitivity analysis using simple

median, weighted median or MR-Egger method (Supplementary Table 2). The MR-Egger method showed directional pleiotropy in the analysis of association between HDL and heart failure ( $p=0.027$ ), but not in other biochemical and clinical measures associations (Supplementary Table 2). We didn't find associations between genetically predicted LDL, total cholesterol, fasting glucose, fasting insulin, 2h glucose, HbA1C, uric acid, adiponectin, DBP, pulse pressure and heart rate with risk of heart failure (Figure 2).

#### **DISCUSSION**

In the present study, we for the first time systematically investigated causal relationships of modifiable risk factors with heart failure using a MR approach. We found suggestive associations of genetically predicted education, circulating mono-unsaturated fatty acid, CRP, HDL, triglycerides, and SBP with incident heart failure ( $0.0019 < p < 0.05$ ), whereas none of the modifiable risk factors were significantly associated with incidence rate or mortality of heart failure after Bonferroni correction ( $p < 0.0019$ ).

As far as we know, no studies have used MR framework to reveal the causal association between level of education and heart failure. Consistent with conventional observational studies,<sup>37</sup> educational attainment was found to have causal protective effect on incident heart failure in our analysis. One possible reason is that people with low level of education might have a poorer lifestyle and cardiometabolic profile.<sup>47,48</sup> Health care inequality and occupational status might also explain the higher risk of heart failure.<sup>49</sup> Moreover, we provided evidence for the first time that circulating mono-unsaturated fatty acid is causally associated with increased incident heart failure using MR approach, which was suggested by previous conventional observational studies.<sup>50,51</sup> The potential mechanisms might be explained by increased blood pressure or



**Figure 2.** Odds ratio for associations between genetically predicted obesity-related traits, lifestyle and dietary factors, biochemical and clinical measures and incident and mortality of heart failure. The estimates are scaled to represent the association of 1-cigarette a day of smoking, 1-year increase of education attained, 1-cup a day of coffee consumption, 1-drink a week of alcohol consumption, 1-unit increase in natural log transformed 25-hydroxyvitamin D and C-reactive protein, 5-bpm increase in resting heart rate, 1-SD for the other continuous risk factors and 1-unit higher log odds of binary risk factors. BMI: body mass index; WHRadjBMI: waist-hip ratio adjusted by BMI; HbA1C: glycated hemoglobin; SBP: systolic blood pressure; DBP: diastolic blood pressure; MUFA: mono-unsaturated fatty acid.

heightened inflammation,<sup>52,53</sup> which were also identified as risk factors by our analysis. In our results, the positive associations of hypertension, hyperlipidemia and high CRP concentrations with incident heart failure were in accordance with several RCTs.<sup>54-56</sup> We didn't find associations between genetically predicted glycemic index and risk of heart failure, indicating metabolic disorders might not affect heart failure via glucose metabolism. However, we cannot exclude small effect estimates on account of limited power of our analyses. Corroborating previous MR,<sup>31</sup> we found no association between uric acid and heart failure, suggesting the association observed in observational studies could be affected by reverse causation or confounders.<sup>11</sup>

We didn't find any significant causal association for mortality of heart failure. Our findings are consistent with RCTs in which targeting traditional risk factors (e.g. hypertension, hyperlipidemia) didn't have a beneficial effect on heart failure patients,<sup>57-59</sup> although it is generally believed that the pathophysiological mechanism leading to incident heart failure is similar to the progression of heart failure. Therefore, it is suggested that decreasing the incidence rate is the primary goal for reducing the burden of heart failure.

Strengths of our study include the use of the MR framework in assessing the etiology of disease to avoid reverse causation and confounding, the derivation of data from large GWAS of risk factors, and the restriction to data from predominantly European ancestry cohorts to reduce the confounding caused by population stratification. More importantly, by leveraging large scale GWAS summary statistics, we systematically explored multiple risk factors for heart failure which have not been investigated in previous MR studies. Even when compared to those risk factors examined in previous MR studies, our analysis provides several advantages. For example, though genetically predicted BMI was previously identified as risk factor of incident heart failure, we constructed genetic instruments for BMI using 77 SNPs (versus 1 or 32 SNPs of previous studies),<sup>30,60</sup> which might allow us to detect false positives with greater instrument strength. However, our analysis also has some limitations. First, we derived genetic variants from large GWAS data, which were significantly associated with corresponding risk factors, but our findings may still be subject to weak instrument bias. However, the majority of risk factors have an F-statistic of >10, and thus likelihood of instrument bias is greatly reduced. Second, it is difficult to exclude the possibility of pleiotropy from causal effects in view of the imprecision of the MR-Egger method in all MR analyses. Finally, the power of some of our analysis is limited, so that we cannot rule out false negative results. Large-scale MR studies should be done to identify additional associations.

In summary, our analysis provides suggestive evidence that several modifiable risk factors play an important role in development of heart failure, underscoring the importance of interventions for primary prevention and management of heart failure. First, given the causal estimates of our analysis, one-year increase of education attained is equivalent to a 43% decrease in incident heart failure, suggesting that promoting education is of promis-

ing practical significance for the prevention of heart failure. Preventive cardiovascular services should be extended to underprivileged communities for the sake of equitable provision of health care. What's more, our results indicated that lipid traits, fatty acids and inflammation may be causally related to heart failure risk, and thus early detection and treatment of people with metabolic dysregulation has great importance in the prevention of heart failure and will provide effective targets to improve the prognosis of patients.

#### CONFLICT OF INTEREST AND FUNDING DISCLOSURES

All authors declare: no support from companies for the submitted work; no relationships with companies that might have an interest in the submitted work in the previous three years; no spouses, partners, or children have no financial relationships that may be relevant to the submitted work; no non-financial interests that may be relevant to the submitted work. The study was supported by grants from the National Key R&D Program of China (2019YFC2003400), and High-performance Computing Platform of Peking University. The funding organization had no role in the preparation of the manuscript.

#### REFERENCES

1. Metra M, Teerlink JR. Heart failure. *Lancet*. 2017; 390(10106):1981-95. doi: 10.1016/s0140-6736(17)31071-1.
2. Ziaeeian B, Fonarow GC. Epidemiology and aetiology of heart failure. *Nat Rev Cardiol*. 2016;13:368-78. doi: 10.1038/nrcardio.2016.25.
3. Conrad N, Judge A, Tran J, Mohseni H, Hedgecott D, Crespillo AP et al. Temporal trends and patterns in heart failure incidence: a population-based study of 4 million individuals. *Lancet*. 2018;391(10120):572-80. doi: 10.1016/s0140-6736(17)32520-5.
4. Bloom MW, Greenberg B, Jaarsma T, Januzzi JL, Lam CSP, Maggioni AP, Trochu JN, Butler J. Heart failure with reduced ejection fraction. *Nat Rev Dis Primers*. 2017;3:17058. doi: 10.1038/nrdp.2017.58.
5. Koudstaal S, Pujades-Rodriguez M, Denaxas S, Gho J, Shah AD, Yu N et al. Prognostic burden of heart failure recorded in primary care, acute hospital admissions, or both: a population-based linked electronic health record cohort study in 2.1 million people. *Eur J Heart Fail*. 2017;19:1119-27. doi: 10.1002/ejhf.709.
6. Bleumink GS, Knetsch AM, Sturkenboom MC, Straus SM, Hofman A, Deckers JW, Witteman JC, Stricker BH. Quantifying the heart failure epidemic: prevalence, incidence rate, lifetime risk and prognosis of heart failure The Rotterdam Study. *Eur Heart J*. 2004;25:1614-9. doi: 10.1016/j.ehj.2004.06.038.
7. Bozkurt B, Aguilar D, Deswal A, Dunbar SB, Francis GS, Horwich T et al. Contributory Risk and Management of Comorbidities of Hypertension, Obesity, Diabetes Mellitus, Hyperlipidemia, and Metabolic Syndrome in Chronic Heart Failure: A Scientific Statement From the American Heart Association. *Circulation*. 2016;134:e535-e78. doi: 10.1161/cir.0000000000000450.
8. Kamimura D, Cain LR, Mentz RJ, White WB, Blaha MJ, DeFilippis AP et al. Cigarette Smoking and Incident Heart Failure: Insights From the Jackson Heart Study. *Circulation*. 2018;137:2572-82. doi: 10.1161/circulationaha.117.031912.
9. Komajda M. Heart rate in chronic heart failure: an overlooked risk factor. *Eur Heart J*. 2015;36:648-9. doi: 10.1093/eurheartj/ehu440.

10. Drager LF, McEvoy RD, Barbe F, Lorenzi-Filho G, Redline S. Sleep apnea and cardiovascular disease: lessons from recent trials and need for team science. *Circulation*. 2017;136:1840-50. doi: 10.1161/circulationaha.117.029400.
11. Huang H, Huang B, Li Y, Huang Y, Li J, Yao H, Jing X, Chen J, Wang J. Uric acid and risk of heart failure: a systematic review and meta-analysis. *Eur J Heart Fail*. 2014;16:15-24. doi: 10.1093/eurjhf/hft132.
12. Kalogeropoulos A, Georgiopoulou V, Psaty BM, Rodondi N, Smith AL, Harrison DG et al. Inflammatory markers and incident heart failure risk in older adults: the Health ABC (Health, Aging, and Body Composition) study. *J Am Coll Cardiol*. 2010;55:2129-37. doi: 10.1016/j.jacc.2009.12.045.
13. Taylor J. Depression associated with five-fold increased mortality risk in heart failure patients. *Eur Heart J*. 2015;36:1946.
14. Zafrir B, Lund LH, Laroche C, Ruschitzka F, Crespo-Leiro MG, Coats AJS et al. Prognostic implications of atrial fibrillation in heart failure with reduced, mid-range, and preserved ejection fraction: a report from 14 964 patients in the European Society of Cardiology Heart Failure Long-Term Registry. *Eur Heart J*. 2018;39:4277-84. doi: 10.1093/eurheartj/ehy626.
15. Larsson SC, Orsini N, Wolk A. Alcohol consumption and risk of heart failure: a dose-response meta-analysis of prospective studies. *Eur J Heart Fail*. 2015;17:367-73. doi: 10.1002/ejhf.228.
16. Kizer JR, Benkeser D, Arnold AM, Mukamal KJ, Ix JH, Zieman SJ et al. Associations of total and high-molecular-weight adiponectin with all-cause and cardiovascular mortality in older persons: the Cardiovascular Health Study. *Circulation*. 2012;126:2951-61. doi: 10.1161/circulationaha.112.135202.
17. Pandey A, Garg S, Khunger M, Darden D, Ayers C, Kumbhani DJ, Mayo HG, de Lemos JA, Berry JD. Dose-response relationship between physical activity and risk of heart failure: a meta-analysis. *Circulation*. 2015;132:1786-94. doi: 10.1161/circulationaha.115.015853.
18. Dos Reis Padilha G, Sanches Machado d'Almeida K, Ronchi Spillere S, Correa Souza G. Dietary patterns in secondary prevention of heart failure: a systematic review. *Nutrients*. 2018;10:828. doi: 10.3390/nu10070828.
19. Ding M, Bhupathiraju SN, Satija A, van Dam RM, Hu FB. Long-term coffee consumption and risk of cardiovascular disease: a systematic review and a dose-response meta-analysis of prospective cohort studies. *Circulation*. 2014;129:643-59. doi: 10.1161/circulationaha.113.005925.
20. Kostis JB, Davis BR, Cutler J, Grimm RH, Jr., Berge KG, Cohen JD et al. Prevention of heart failure by antihypertensive drug treatment in older persons with isolated systolic hypertension. SHEP Cooperative Research Group. *JAMA*. 1997;278:212-6.
21. Bohm M, Swedberg K, Komajda M, Borer JS, Ford I, Dubost-Brama A, Lerebours G, Tavazzi L. Heart rate as a risk factor in chronic heart failure (SHIFT): the association between heart rate and outcomes in a randomised placebo-controlled trial. *Lancet*. 2010;376(9744):886-94. doi: 10.1016/s0140-6736(10)61259-7.
22. Howden EJ, Sarma S, Lawley JS, Opondo M, Cornwell W, Stoller D, Urey MA, Adams-Huet B, Levine BD. Reversing the cardiac effects of sedentary aging in middle age—a randomized controlled trial: implications for heart failure prevention. *Circulation*. 2018;137:1549-60. doi: 10.1161/circulationaha.117.030617.
23. Everett BM, Cornel JH, Lainscak M, Anker SD, Abbate A, Thuren T, Libby P, Glynn RJ, Ridker PM. Anti-inflammatory therapy with canakinumab for the prevention of hospitalization for heart failure. *Circulation*. 2019;139:1289-99. doi: 10.1161/circulationaha.118.038010.
24. Papadaki A, Martinez-Gonzalez MA, Alonso-Gomez A, Rekondo J, Salas-Salvado J, Corella D et al. Mediterranean diet and risk of heart failure: results from the PREDIMED randomized controlled trial. *Eur J Heart Fail*. 2017;19:1179-85. doi: 10.1002/ejhf.750.
25. Preiss D, Campbell RT, Murray HM, Ford I, Packard CJ, Sattar N et al. The effect of statin therapy on heart failure events: a collaborative meta-analysis of unpublished data from major randomized trials. *Eur Heart J*. 2015;36:1536-46. doi: 10.1093/eurheartj/ehv072.
26. Thanassoulis G, O'Donnell CJ. Mendelian randomization: nature's randomized trial in the post-genome era. *JAMA*. 2009;301:2386-8. doi: 10.1001/jama.2009.812.
27. Allara E, Morani G, Carter P, Gkatzionis A, Zuber V, Foley CN et al. Genetic determinants of lipids and cardiovascular disease outcomes: a wide-angled Mendelian randomization investigation. *Circ Genom Precis Med*. 2019;12:e002711. doi: 10.1161/circgen.119.002711.
28. He L, Culminkaya I, Loika Y, Arbeev KG, Bagley O, Duan M, Yashin AI, Kulminski AM. Causal effects of cardiovascular risk factors on onset of major age-related diseases: A time-to-event Mendelian randomization study. *Exp Gerontol*. 2018;107:74-86. doi: 10.1016/j.exger.2017.09.019.
29. Larsson SC, Back M, Rees JMB, Mason AM, Burgess S. Body mass index and body composition in relation to 14 cardiovascular conditions in UK Biobank: a Mendelian randomization study. *Eur Heart J*. 2020;41:221-6. doi: 10.1093/eurheartj/ehz388.
30. Fall T, Hagg S, Magi R, Ploner A, Fischer K, Horikoshi M et al. The role of adiposity in cardiometabolic traits: a Mendelian randomization analysis. *PLoS Med*. 2013;10:e1001474. doi: 10.1371/journal.pmed.1001474.
31. Keenan T, Zhao W, Rasheed A, Ho WK, Malik R, Felix JF et al. Causal assessment of serum urate levels in cardiometabolic diseases through a Mendelian randomization study. *J Am Coll Cardiol*. 2016;67:407-16. doi: 10.1016/j.jacc.2015.10.086.
32. Shah S, Henry A, Roselli C, Lin H, Sveinbjornsson G, Fatemifar G et al. Genome-wide association and Mendelian randomisation analysis provide insights into the pathogenesis of heart failure. *Nat Commun*. 2020;11:163. doi: 10.1038/s41467-019-13690-5.
33. Smith NL, Felix JF, Morrison AC, Demissie S, Glazer NL, Loehr LR et al. Association of genome-wide variation with the risk of incident heart failure in adults of European and African ancestry: a prospective meta-analysis from the cohorts for heart and aging research in genomic epidemiology (CHARGE) consortium. *Circ Cardiovasc Genet*. 2010;3:256-66. doi: 10.1161/circgenetics.109.895763.
34. Smith JG, Felix JF, Morrison AC, Kalogeropoulos A, Trompet S, Wilk JB et al. Discovery of genetic variation on chromosome 5q22 associated with mortality in heart failure. *PLoS Genet*. 2016;12:e1006034. doi: 10.1371/journal.pgen.1006034.
35. Arnett DK, Blumenthal RS, Albert MA, Buroker AB, Goldberger ZD, Hahn EJ et al. 2019 ACC/AHA guideline on the primary prevention of cardiovascular disease: executive summary: a report of the American College of Cardiology/American Heart Association Task Force on Clinical Practice Guidelines. *Circulation*. 2019;140:e563-e95. doi: 10.1161/cir.0000000000000677.
36. Aune D, Sen A, Norat T, Janszky I, Romundstad P, Tonstad S, Vatten LJ. Body mass index, abdominal fatness, and heart

- failure incidence and mortality: a systematic review and dose-response meta-analysis of prospective studies. *Circulation*. 2016;133:639-49. doi: 10.1161/circulationaha.115.016801.
37. Hawkins NM, Jhund PS, McMurray JJ, Capewell S. Heart failure and socioeconomic status: accumulating evidence of inequality. *Eur J Heart Fail*. 2012;14:138-46. doi: 10.1093/eurjhf/hfr168.
  38. Yu X, Huang L, Zhao J, Wang Z, Yao W, Wu X, Huang J, Bian B. The relationship between serum zinc level and heart failure: a meta-analysis. *Biomed Res Int*. 2018;2018:2739014. doi: 10.1155/2018/2739014.
  39. D'Amore C, Marsico F, Parente A, Paolillo S, De Martino F, Gargiulo P et al. Vitamin D deficiency and clinical outcome in patients with chronic heart failure: a review. *Nutr Metab Cardiovasc Dis*. 2017;27:837-49. doi: 10.1016/j.numecd.2017.07.009.
  40. Djousse L, Akinkuolie AO, Wu JH, Ding EL, Gaziano JM. Fish consumption, omega-3 fatty acids and risk of heart failure: a meta-analysis. *Clin Nutr*. 2012;31:846-53. doi: 10.1016/j.clnu.2012.05.010.
  41. Lakhani I, Wong MV, Hung JKF, Gong M, Waleed KB, Xia Y et al. Diagnostic and prognostic value of serum C-reactive protein in heart failure with preserved ejection fraction: a systematic review and meta-analysis. *Heart Fail Rev*. 2020. doi: 10.1007/s10741-020-09927-x.
  42. Sente T, Gevaert A, Van Berendoncks A, Vrints CJ, Hoymans VY. The evolving role of adiponectin as an additive biomarker in HFrEF. *Heart Fail Rev*. 2016;21:753-69. doi: 10.1007/s10741-016-9578-z.
  43. VanderWeele TJ, Tchetgen Tchetgen EJ, Cornelis M, Kraft P. Methodological challenges in mendelian randomization. *Epidemiology*. 2014;25:427-35. doi: 10.1097/ede.0000000000000081.
  44. Lawlor DA, Harbord RM, Sterne JA, Timpson N, Davey Smith G. Mendelian randomization: using genes as instruments for making causal inferences in epidemiology. *Stat Med*. 2008;27:1133-63. doi: 10.1002/sim.3034.
  45. Burgess S, Butterworth A, Thompson SG. Mendelian randomization analysis with multiple genetic variants using summarized data. *Genet Epidemiol*. 2013;37:658-65. doi: 10.1002/gepi.21758.
  46. Bowden J, Davey Smith G, Burgess S. Mendelian randomization with invalid instruments: effect estimation and bias detection through Egger regression. *Int J Epidemiol*. 2015;44:512-25. doi: 10.1093/ije/dyv080.
  47. Christensen S, Mogelvang R, Heitmann M, Prescott E. Level of education and risk of heart failure: a prospective cohort study with echocardiography evaluation. *Eur Heart J*. 2011;32:450-8. doi: 10.1093/eurheartj/ehq435.
  48. Ingelsson E, Lind L, Arnlov J, Sundstrom J. Socioeconomic factors as predictors of incident heart failure. *J Card Fail*. 2006;12:540-5. doi: 10.1016/j.cardfail.2006.05.010.
  49. Schaufelberger M, Rosengren A. Heart failure in different occupational classes in Sweden. *Eur Heart J*. 2007;28:212-8. doi: 10.1093/eurheartj/ehl435.
  50. Djousse L, Weir NL, Hanson NQ, Tsai MY, Gaziano JM. Plasma phospholipid concentration of cis-palmitoleic acid and risk of heart failure. *Circ Heart Fail*. 2012;5:703-9. doi: 10.1161/circheartfailure.112.967802.
  51. Yamagishi K, Nettleton JA, Folsom AR. Plasma fatty acid composition and incident heart failure in middle-aged adults: the Atherosclerosis Risk in Communities (ARIC) Study. *Am Heart J*. 2008;156:965-74. doi: 10.1016/j.ahj.2008.06.017.
  52. Petersson H, Basu S, Cederholm T, Riserus U. Serum fatty acid composition and indices of stearyl-CoA desaturase activity are associated with systemic inflammation: longitudinal analyses in middle-aged men. *Br J Nutr*. 2008;99:1186-9. doi: 10.1017/s0007114507871674.
  53. Zheng ZJ, Folsom AR, Ma J, Arnett DK, McGovern PG, Eckfeldt JH. Plasma fatty acid composition and 6-year incidence of hypertension in middle-aged adults: the Atherosclerosis Risk in Communities (ARIC) Study. *Am J Epidemiol*. 1999;150:492-500. doi: 10.1093/oxfordjournals.aje.a010038.
  54. Ettehad D, Emdin CA, Kiran A, Anderson SG, Callender T, Emberson J, Chalmers J, Rodgers A, Rahimi K. Blood pressure lowering for prevention of cardiovascular disease and death: a systematic review and meta-analysis. *Lancet*. 2016;387:957-67. doi: 10.1016/s0140-6736(15)01225-8.
  55. Boekholdt SM, Arsenault BJ, Hovingh GK, Mora S, Pedersen TR, Larosa JC et al. Levels and changes of HDL cholesterol and apolipoprotein A-I in relation to risk of cardiovascular events among statin-treated patients: a meta-analysis. *Circulation*. 2013;128:1504-12. doi: 10.1161/circulationaha.113.002670.
  56. Anand IS, Latini R, Florea VG, Kuskowski MA, Rector T, Masson S et al. C-reactive protein in heart failure: prognostic value and the effect of valsartan. *Circulation*. 2005;112:1428-34. doi: 10.1161/circulationaha.104.508465.
  57. Kjekshus J, Apetrei E, Barrios V, Bohm M, Cleland JG, Cornel JH et al. Rosuvastatin in older patients with systolic heart failure. *N Engl J Med*. 2007;357:2248-61. doi: 10.1056/NEJMoa0706201.
  58. Packer M, Carson P, Elkayam U, Konstam MA, Moe G, O'Connor C et al. Effect of amlodipine on the survival of patients with severe chronic heart failure due to a nonischemic cardiomyopathy: results of the PRAISE-2 study (prospective randomized amlodipine survival evaluation 2). *JACC Heart Fail*. 2013;1:308-14. doi: 10.1016/j.jchf.2013.04.004.
  59. Tavazzi L, Maggioni AP, Marchioli R, Barlera S, Franzosi MG, Latini R et al. Effect of rosuvastatin in patients with chronic heart failure (the GISSI-HF trial): a randomised, double-blind, placebo-controlled trial. *Lancet*. 2008;372(9645):1231-9. doi: 10.1016/s0140-6736(08)61240-4.
  60. Hagg S, Fall T, Ploner A, Magi R, Fischer K, Draisma HH et al. Adiposity as a cause of cardiovascular disease: a Mendelian randomization study. *Int J Epidemiol*. 2015;44:578-86. doi: 10.1093/ije/dyv094.