

Supplementary Materials

First-week caloric intake and 1-year mortality in critically ill medical patients with mechanical ventilation: A retrospective study

Feng-Hsu Wu MD¹, Wen-Cheng Chao MD, PhD^{1,2}, Tsai-Jung Wang MD, MHA¹,
Chen-Yu Wang MD, PhD^{1,3}, Yu-Cheng Wu MD¹

¹*Department of Critical Care Medicine, Taichung Veterans General Hospital, Taichung, Republic of China*

²*Department of Post-Baccalaureate Medicine, College of Medicine, National Chung Hsing University, Taichung, Republic of China*

³*Department of Nursing, Hungkuang University, Taichung, Republic of China*

Corresponding Author:

Dr. Chen Yu Wang, Department of Critical Care Medicine, Taichung Veterans General Hospital, 1650 Taiwan Boulevard Sect. 4, Taichung, Taiwan 407219, Republic of China.

Tel: +886-4-2359-2525 (ext. 3167).

Email: chestmen@gmail.com

Manuscript received 27 September 2025. Initial review completed 27 October 2025. Revision accepted 29 December 2025.

doi: 10.6133/apjcn.202604_35(2).0002

Supplementary Table 1. Cox proportional hazards regression analysis for long-term mortality according to average caloric intake during days 1–7 (tertile classification)

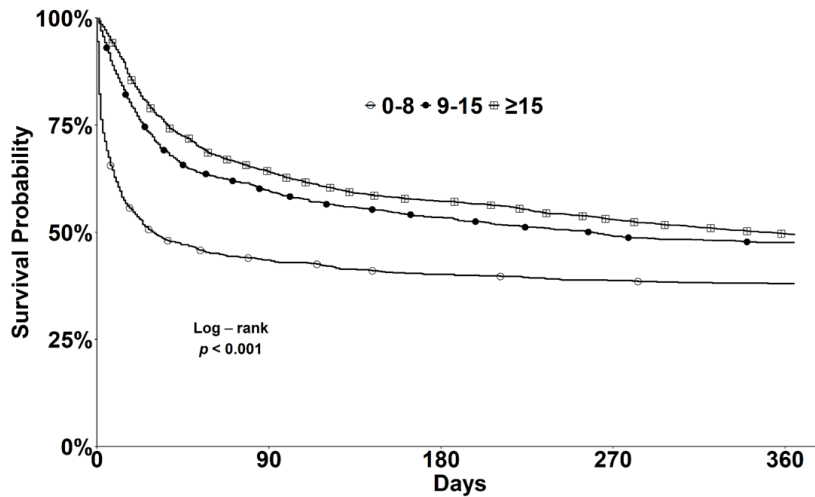
Characteristics	Univariable		Multivariable	
	HR (95% CI)	<i>p</i> value	HR (95% CI)	<i>p</i> value
Age, per year increment	1.01 (1.01-1.01)	<0.001	1.01 (1.00-1.01)	<0.001
Sex (male)	1.18 (1.08-1.30)	<0.001	1.16 (1.05-1.27)	0.003
CCI, per 1 score increment	1.07 (1.04-1.09)	<0.001	1.03 (1.01-1.06)	0.017
BMI, per 1 kg/m ² increment	0.997 (0.988-1.01)	0.515	0.99 (0.98-1.00)	0.061
High nutrition risk (mNUTRIC ≥5)	3.52 (2.81-4.40)	<0.001	1.64 (1.28-2.16)	<0.001
Albumin, per 1 g/dL increment	0.562 (0.523-0.602)	<0.001	0.834 (0.772-0.901)	<0.001
Hemoglobin, per 1 g/dL increment	0.786 (0.764-0.808)	<0.001	0.881 (0.855-0.909)	<0.001
Blood glucose (mmol/L)	0.998 (0.990-1.01)	0.580	0.993 (0.985-1.00)	0.068
APACHE II score, per 1 increment	1.08 (1.07-1.09)	<0.001	1.03 (1.03-1.04)	<0.001
Presence of shock				
Norepinephrine-alone	1.30 (1.17-1.43)	<0.001	1.04 (0.937-1.16)	0.464
Norepinephrine and other vasopressors	4.34 (3.87-4.86)	<0.001	2.20 (1.92-2.51)	<0.001
RRT during ICU admission	1.67 (1.33-2.11)	<0.001	1.07 (0.838-1.36)	0.601
Fluid balance, day 1-7, per liter	1.10 (1.09-1.11)	<0.001	1.08 (1.07-1.09)	<0.001
Etiology of ICU admission				
Acute respiratory failure	Reference		Reference	
Acute neurological dysfunction	0.555 (0.461-0.668)	<0.001	0.724 (0.596-0.879)	0.001
Acute kidney failure	0.542 (0.399-0.735)	<0.001	0.521 (0.382-0.712)	<0.001
Acute cardiac dysfunction	0.851 (0.735-0.986)	0.032	0.658 (0.565-0.767)	<0.001
Acute hematological condition	2.03 (1.74-2.36)	<0.001	1.23 (1.05-1.44)	0.013
Calories intake				
Calories intake, 0-8 per kcal/10 ³ /day	Reference		Reference	
Calories intake 9-15 per kcal/10 ³ /day	0.628 (0.556-0.710)	<0.001	0.566 (0.500-0.641)	<0.001
Calories intake ≥ 15 per kcal/10 ³ /day	0.571 (0.514-0.636)	<0.001	0.506 (0.450-0.568)	<0.001

HR, Hazard Ratio; CI, Confidence Interval; CCI, Charlson Comorbidity Index; BMI, Body Mass Index; mNUTRIC, Modified Nutrition Risk in the Critically Ill; APACHE II, Acute Physiology and Chronic Health Evaluation II; RRT, Renal Replacement Therapy; ICU, Intensive Care Unit

Supplementary Table 2. Cox proportional hazards regression analysis for long-term mortality according to average caloric intake during days 1–7 (quartile classification)

Characteristics	Univariable		Multivariable	
	HR (95% CI)	<i>p</i> value	HR (95% CI)	<i>p</i> value
Age, per year increment	1.01 (1.01-1.01)	<0.001	1.01 (1.01-1.01)	<0.001
Sex (male)	1.18 (1.08-1.30)	<0.001	1.16 (1.05-1.27)	0.003
CCI, per 1 score increment	1.07 (1.04-1.09)	<0.001	1.03 (1.00-1.06)	0.023
BMI, per 1 kg/m ² increment	0.997 (0.988-1.01)	0.515	0.990 (0.980-1.00)	0.045
High nutrition risk (mNUTRIC ≥5)	3.52 (2.81-4.40)	<0.001	1.66 (1.29-2.13)	<0.001
Albumin, per 1 g/dL increment	0.562 (0.523-0.602)	<0.001	0.833 (0.771-0.890)	<0.001
Hemoglobin, per 1 g/dL increment	0.786 (0.764-0.808)	<0.001	0.881 (0.854-0.909)	<0.001
Blood glucose (mmol/L)	0.998 (0.990-1.01)	0.580	0.993 (0.985-1.00)	0.070
APACHE II score, per 1 increment	1.08 (1.07-1.09)	<0.001	1.03 (1.02-1.04)	<0.001
Presence of shock				
Norepinephrine-alone	1.30 (1.17-1.43)	<0.001	1.04 (0.936-1.15)	0.468
Norepinephrine and other vasopressors	4.34 (3.87-4.86)	<0.001	2.20 (1.92-2.51)	<0.001
RRT during ICU admission	1.67 (1.33-2.11)	<0.001	1.08 (0.846-1.37)	0.544
Fluid balance, day 1-7, per liter	1.10 (1.09-1.11)	<0.001	1.08 (1.07-1.09)	<0.001
Etiology of ICU admission				
Acute respiratory failure	Reference		Reference	
Acute neurological dysfunction	0.555 (0.461-0.668)	<0.001	0.721 (0.594-0.876)	<0.001
Acute kidney failure	0.542 (0.399-0.735)	<0.001	0.522 (0.382-0.712)	<0.001
Acute cardiac dysfunction	0.851 (0.735-0.986)	0.032	0.658 (0.565-0.767)	<0.001
Acute hematological condition	2.03 (1.74-2.36)	<0.001	1.22 (1.04-1.44)	0.015
Calories intake				
Calories intake, 0-8 per kcal/10 ³ /day	Reference		Reference	
Calories intake 9-14 per kcal/10 ³ /day	0.628 (0.556-0.710)	<0.001	0.565 (0.499-0.640)	<0.001
Calories intake 15-20 per kcal/10 ³ /day	0.649 (0.563-0.748)	<0.001	0.562 (0.485-0.652)	<0.001
Calories intake ≥ 20 per kcal/10 ³ /day	0.542 (0.484-0.608)	0.032	0.482 (0.425-0.545)	<0.001

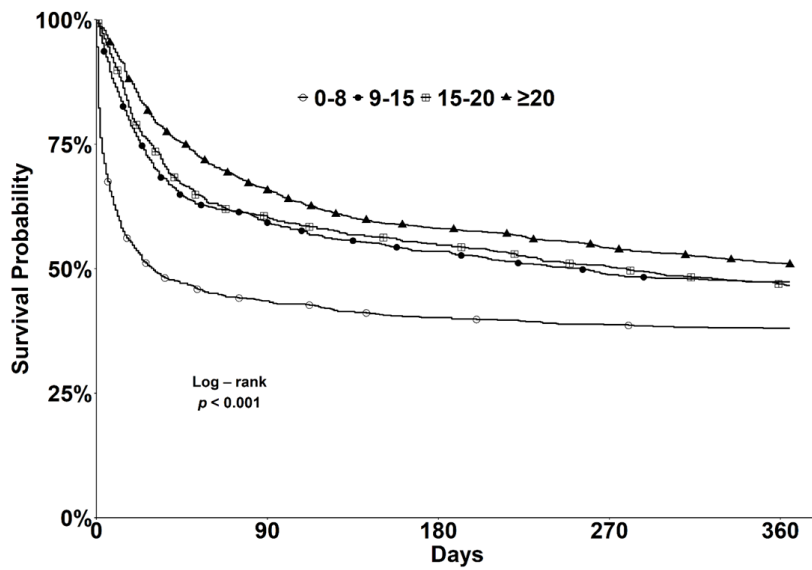
HR, Hazard Ratio; CI, Confidence Interval; CCI, Charlson Comorbidity Index; BMI, Body Mass Index; mNUTRIC, Modified Nutrition Risk in the Critically Ill; APACHE II, Acute Physiology and Chronic Health Evaluation II; RRT, Renal Replacement Therapy; ICU, Intensive Care Unit



Number at risk

0-8	839	365	337	325	319
9-15	991	593	530	487	472
≥15	1934	1243	1106	1025	960

Supplementary Figure 1. Kaplan–Meier survival curves stratified by average caloric intake during days 1–7 of ICU admission (0–8 vs 9–15 vs ≥15 kcal/kg/day).



Number at risk

0-8	839	365	337	325	319
9-15	849	506	454	414	402
15-20	729	442	399	368	342
≥20	1347	888	783	730	688

Supplementary Figure 2. Kaplan–Meier survival curves stratified by average caloric intake during days 1–7 of ICU admission (0–8 vs 9–15 vs 15–20 vs ≥20 kcal/kg/day).